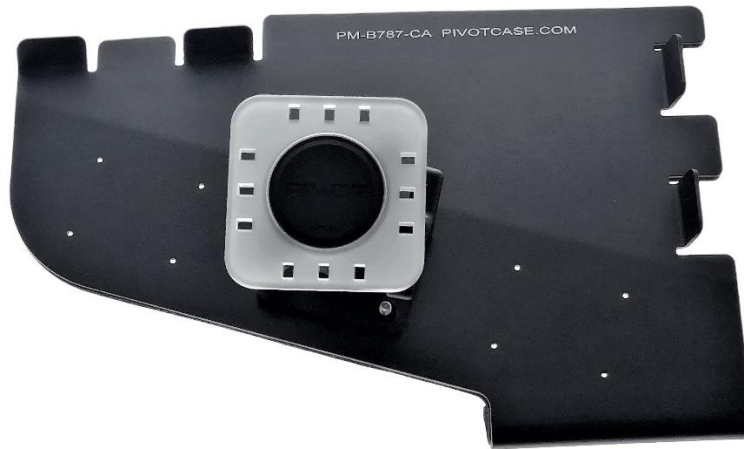


PIVOT™

Better Connection. Better Protection.
*Making the **Case** for Aviation.*

Boeing B787 Long Term Removable Mount LTRM Installation and Removal Manual



Document no. LTRM Manual PM-B787-CA FO_Rev_2_25 MAR 2019	Revision 2	Date Mar 25, 2019	Page 2 (5)
---	----------------------	----------------------	---------------

Read Before Use

Follow the instructions to ensure proper installation, deployment and maintenance of the PIVOT B787 LTRM unit.

Purpose

Provide information for correct installation, removal and use of the PIVOT LTRM Mount for the Boeing B787.

Extent

This instruction manual is appropriate for all personnel involved in the installation, removal or use of the PIVOT LTRM for the Boeing B787.

Reference / Definitions

LTRM Long Term Removable Mount
 CA Captain's Side Mount (PM-B787-CA)
 FO First Officer's Side Mount (PM-B787-FO)



Responsibility

PIVOT reserves the right to make design updates to meet new requirements without obligation to modify existing installations. This manual is subject to change without notice. Service Bulletins may be issued separately and their effect on this manual will be made evident by reissue of the appropriate list of Service Bulletins. This document can only be changed by an authorized PIVOT engineer Project Manager.

Illustrations

Visual depictions are for explanatory purposes only.

Overview

The PIVOT LTRM Mount consists of several parts:

- Contoured attachment plate
- High-deflection AMPS adapter with PPK-1 mounting plate

Total installation time for a shipset (CA and FO) is approximately five (5) minutes. Captain and First Officer LTRM units are mirrored and have the same installation/removal process. Installation does not require tools. Accomplishing the steps detailed in the manual provide any user with required data for successful installation, removal or use. You may also want to refer to the following: <https://pivotcase.com/ltrm/>.

LTRM Installation Instructions

Hold the PIVOT LTRM with one hand and move it into position over the window sill.



With one hand, raise the forward chart spring clip. Slide the LTRM underneath the clip. Then lower the clip and ensure it captures the 2 vertical tabs on the LTRM.



Raise the aft/outboard chart spring clip. Rotate the LTRM so the outboard edge of the LTRM abuts the raised clip housing. Lower the clip to capture the 2 vertical tabs on the LTRM.



The installation is complete.



Attachment & Removal of PIVOT Case to Mount

Refer to PIVOT Case User Guide for details.

Document no. LTRM Manual PM-B787-CA FO_Rev_2_25 MAR 2019	Revision 2	Date Mar 25, 2019	Page 4 (5)
---	----------------------	----------------------	---------------

LTRM Removal Instructions

Lift up the aft/outboard chart spring clip. Rotate the LTRM inward so the vertical tabs are moved away from the clip. Lower the chart spring clip.



Lift the forward chart spring clip up and over the vertical tabs on the LTRM. Slide the LTRM out from underneath the raised clip. Then lower the clip.



The removal is complete.



Periodic Care

A visual inspection of the PIVOT LTRM should be conducted by a maintenance technician every 120 days.

- The LTRM should be removed and visually inspected for any structural deformation or visual damage that may affect proper fit. If damaged, remove mount from aircraft per the instruction manual and repair or replace.
- Visually inspect the PIVOT mounting plate and tension ring for visible damage. It should be free of cracks and other visible damage. The tension ring should move freely and be free of cracks or any fracture. If damage is visible to the mounting plate or tension ring, they should be replaced
- Visually inspect the baseplate where the pedestal is fastened to the metal shroud. If fasteners are missing, remove LTRM from service and replace fasteners before further use.
- LTRM part numbers should be cross-checked to ensure that the appropriate LTRM is installed in the correct position.

Document no. LTRM Manual PM-B787-CA FO_Rev_2_25 MAR 2019	Revision 2	Date Mar 25, 2019	Page 5 (5)
---	----------------------	----------------------	---------------

- Scratches and other surface imperfections are typical and do not affect the performance of the LTRM.
- All surfaces of the LTRM should be wiped with a solvent-free cleaner to remove any accumulated dirt or debris prior to being re-installed.

Additional Information

To learn more, please visit pivotcase.com for instructional videos, product support and additional information about PIVOT products. You'll find valuable online resources provided to enhance your user experience and see the complete line of PIVOT products.

If you have questions, please contact PIVOT Support.



www.pivotcase.com/support



sales@pivotcase.com



1-888-4-FLYBOYS (1-888-435-9269)
Outside the U.S.A.: 281-895-0128



www.youtube.com/c/pivotcasevideo



TM and © 2019 Fly Boys All rights reserved. Designed in USA. Printed in USA.